

Prague Airport Rescue and Fire Brigade

**Cooperation with Municipal
Fire Brigade**

(based on bilateral agreement)



Airport Prague Fire Brigade (general summary)

- Building intervention (team 1+3 firemen)
- Vehicles and personnel in accordance with all regulations (CR law, ICAO standards, EU ...)
- ARFF stairs
- Airport Prague fire brigade provide services across two region (Capital Prague and Central Region)

Question: Is that all enough to deal with large accident?



Creating of bilateral agreement with Capital Prague fire brigade

Question: Is a recommendation about cooperation with municipal (community) sources sufficient for effective dealing with serious accident?

- Airport Prague fire brigade considering that the best way to solve it is to be a leading part of whole emergency system.
- There are space for creating premium services for customers (PAX, airlines, companies...).
- With signet agreement Airport fire brigade become full part of **Integrated rescue system of CR** (including area superiority, commanding priority, powers equal to public firefighters).
- This is more than adapting civil aviation recommendation (Annex 14, ASM pt.1 & 7).

General weakness of Airport Prague fire brigade

- Expensive and less frequent practical training for real situation
- In common condition less experience with building, traffic accident intervention than municipal fire brigade.
- Need of training large scales of skills and areas of fire activities at the expense of reduction of civil aviation specialization.
- Limited resources (especially manpower)

Advantages of close cooperation with municipal fire brigade

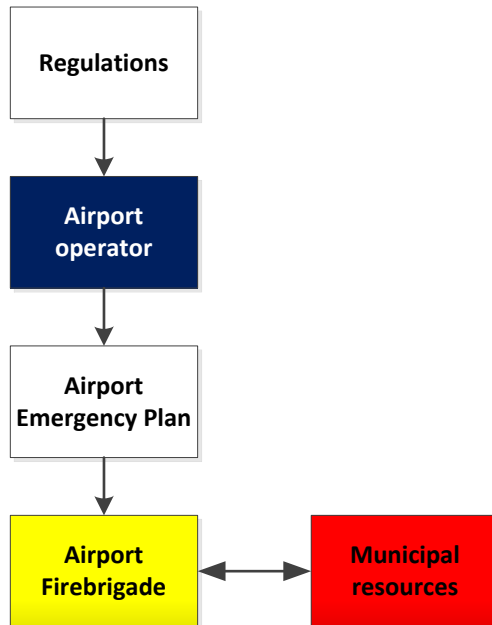
- Access to well equipped vehicle and technology base.
- Access to manpower.
- Drill and training our personnel providing more and various interventions beyond airport fence.
- Training close cooperation by dealing with real situations.
- Best way to be prepare for serious event.

Integrated Rescue System of Czech Republic

- System of law to ensure cooperation, leading, activation of rescue services, and specialized agencies.
- Airport Prague under this contract is a main part of (IRS)
- Defined communication scheme
- Large dose of powers and responsibility

Airport Emergency Plan in Prague

Common implementation




Airport Prague implementation



Items of bilateral Agreement

- Definition of area of superiority Airport Prague fire brigade
- Definition of resources **on-demand** for both sides
- Definition of procedures and drills
- Obligations of dispatch centers (communication scheme)
- Updates of contact information
- Annexes (maps grids, coordinates, **operations procedures**)

Defined Operations procedures in Agreement

- Procedures for Civil aviation Emergencies
- Aircraft Accident procedures
- Procedures for building Innervations
- Other extraordinary events (e.g. Radiation, recovery...)
- Waiting place, determination place. 

Disabled aircraft removal

- Framework to provide services beyond regions
- Ability of works protected by insurance of IRS
- Cooperation with other units

Outlook to future

- Determine clear border of audit and controlling mechanism (CAA vs. Fire brigade general directory)
- Creating the same for medical services

Summary

- Premium services for airport customers
- Better safety
- More effective investment to Airport fire brigade
- Better performance and training (learning by doing)
- Smooth and effective cooperation with municipal units
- Self independence and responsibility (respected part of company)
- **Exchange of resources is not based on money costs**

Questions ?

Thanks for your attention

Karel Moravec

Deputy fire chief

Airport Prague

K Letisti 6/1019

160 08 Prague 6

Tel.: +420 220 115 425

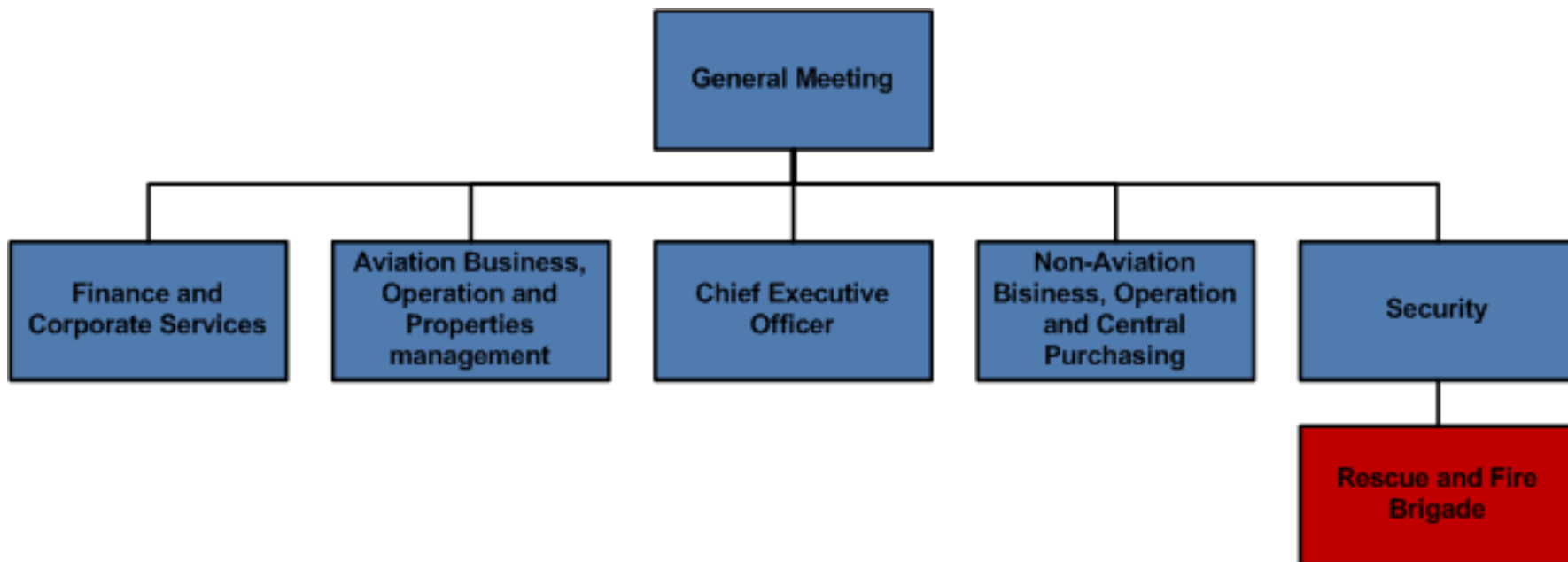
+420 602 661 534

Fax: +420 220 116 232

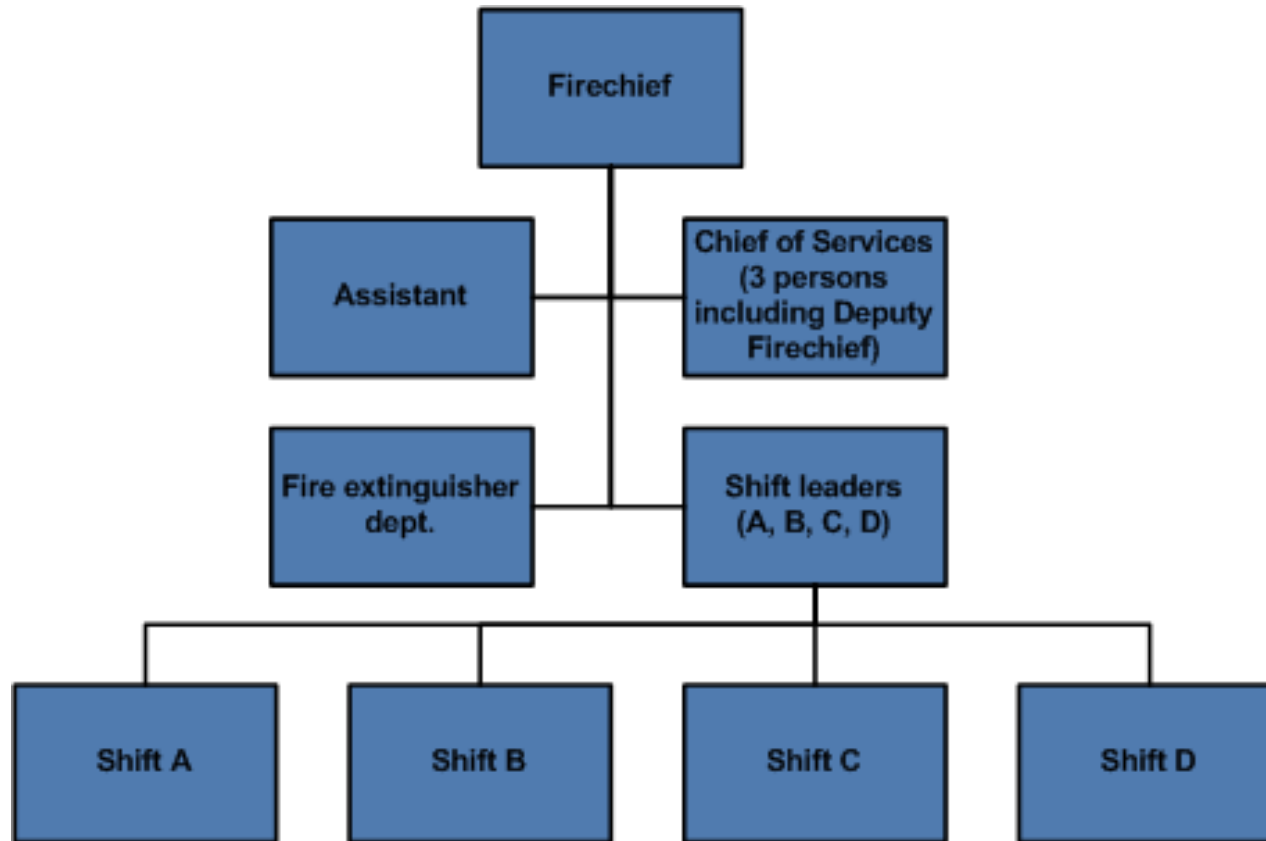
karel.moravec@prg.aero



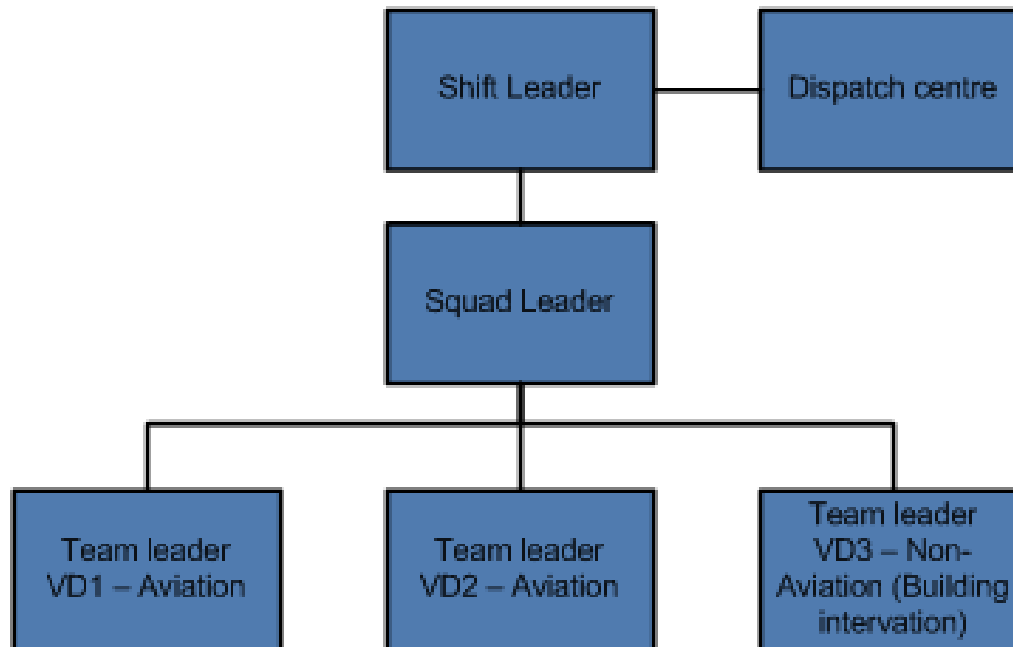
Organisation – ARFF in Airport Prague



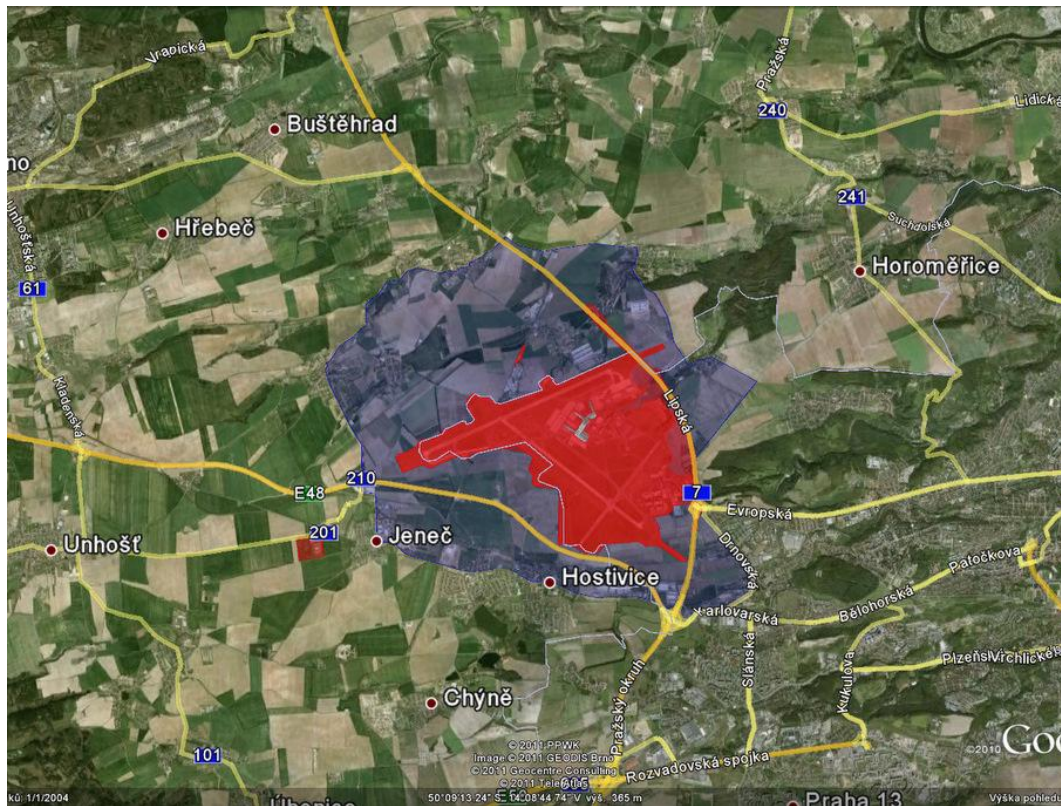
Organisation – Firebrigade organisation chart



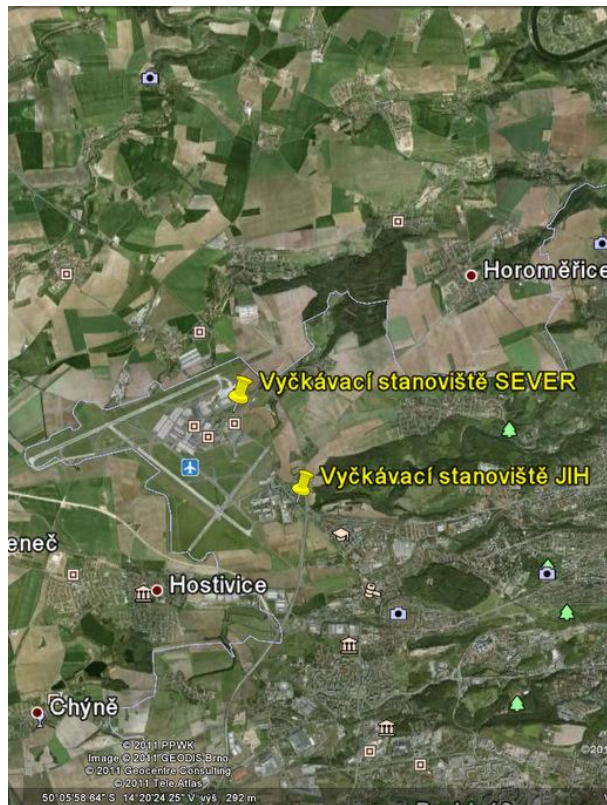
Organisation – Shift organisation



Area of interest



Waiting places (North area, South area)



Determination place

